

Shelly

PRO 3EM SWITCH ADD-ON



LOAD SHEDDING

Keep track of how much energy your solar panels and wind turbines are generating and save effortlessly by controlling your consumption with Shelly Pro 3EM Add-on. Connect Shelly Pro Add-On to your appliances and use Shelly Pro 3EM's real-time information on how much energy has been generated and consumed. When you need to save energy, Shelly Pro3EM Add-on can automatically switch off non-essential appliances in your home.

WEATHER-BASED CONTROL

Shelly Pro 3EM, enhanced with the Shelly Pro 3EM Add-on, offers weather-driven energy optimization. By scripting, you can efficiently control your appliances based on the weather forecast. Upon receiving real-time weather updates, Shelly Pro 3EM takes measures as defined in the script. For example, if the forecast indicates that it's going to be a sunny day, Shelly Pro 3EM Add-On can automatically turn off the heating anticipating higher temperatures.

PV SYSTEMS BALANCING

When your PV system is producing more energy than your home consumes, Shelly Pro 3EM Add-On can automatically activate appliances to make use of it. For example, you can set it to turn on your water heater, charging station for electric vehicles, or other energy-intensive appliances. This way, you make the most of the abundant energy generated by your PV system and reduce dependency on the grid.



DIN rail mountable
attached to a Shelly Pro 3EM



Dry contacts
A galvanically isolated switch designed to expand the capabilities of your Shelly Pro 3EM devices



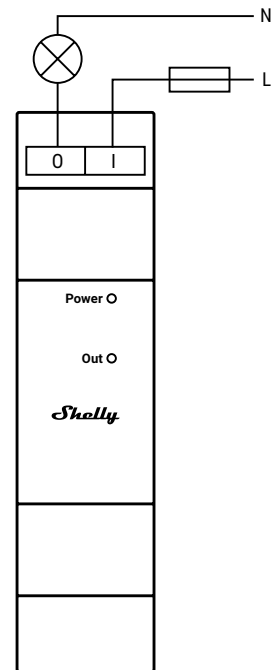
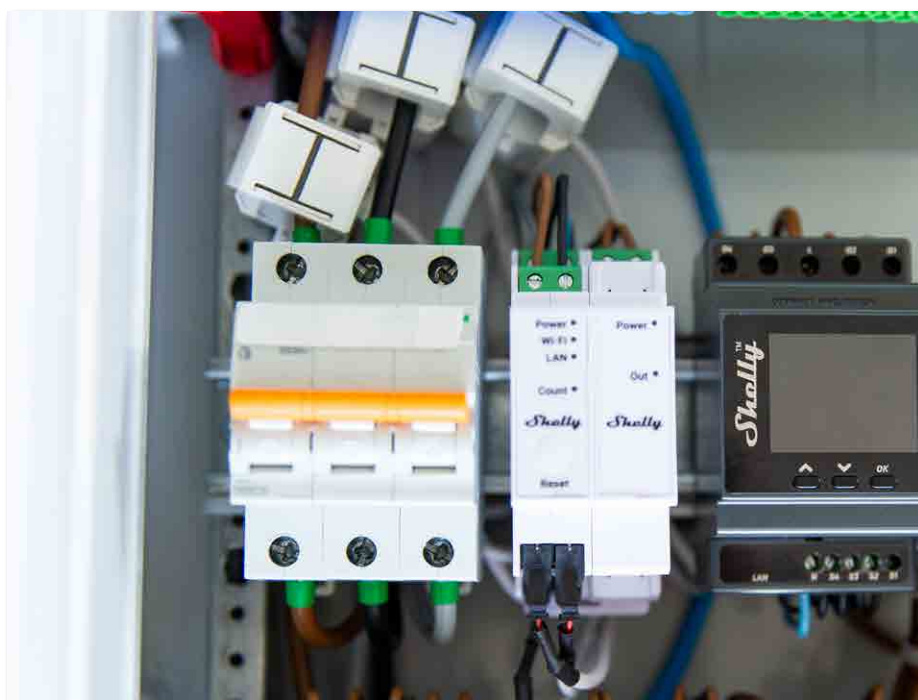
WHY SHELLY PRO 3EM SWITCH ADD-ON?

A galvanically isolated switch designed to expand the capabilities of your Shelly Pro 3EM device. This add-on allows you to easily control contactors and other electrical devices, giving you greater flexibility and control over your consumption.

Only compatible with Shelly Pro 3EM devices!

TECHNICAL SPECIFICATIONS

Power supply DC	3.3 V and 12 V (from Shelly Pro 3EM device)
Mounting	DIN rail, attached to a Shelly Pro 3EM
Working temperature	-20°C to 40°C / -5°F to 105°F
Humidity	30 % to 70 % RH
Max switching voltage AC	240 V
Max switching voltage DC	30 V
Max switching current AC	2 A
Max switching current DC	2 A
Power consumption	< 1 W
Dimensions (HxWxD)	94x19x69 mm / 3.70x0.75x2.71 in



Legend

Device terminals:

O: Relay output terminal

I: Relay input terminal

Cables:

N: Neutral cable

L: Live (110 - 240 VAC) cable