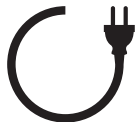


# MYRA LED

220-240V~50-60Hz LED 15W IP54



3306776	15W	220-240V~50/60Hz	1250 lumen	3000K	Polycarbonat	Ikke dimbar	IP54
3306777	15W	220-240V~50/60Hz	1250 lumen	3000K	Polycarbonat	Ikke dimbar	IP54

**NO:** Stilig takarmatur. LED har meget lang levetid og reduserer strømkostnadene og er derfor også meget miljøbesparende. Armaturet er laget av polykarbonat. Armaturet passer til alle områder som trenger belysning.

**EN:** Stylish luminaire. LED have a very long life and reduces energy costs and is therefore also very eco-friendly. The luminaire are made of polycarbonate. The luminaire are suitable for all areas that need lighting.

## MONTERING / MOUNTING

### NO:

1. Fest monteringsbraketten.

1.1. For betong tak: Bruk kabeluttak som et sentralt punkt, forskyv 70 mm og borr to Ø5 mm hull. Putt to 5 mm plastplugger i hullene.

1.2. Bruk to Ø4 mm x 30 mm skruer i plastpluggene og fest braketten til taket.

1.3. For andre tak: Bruk to Ø4 mm x 15 mm skruer for å montere braketten til taket.

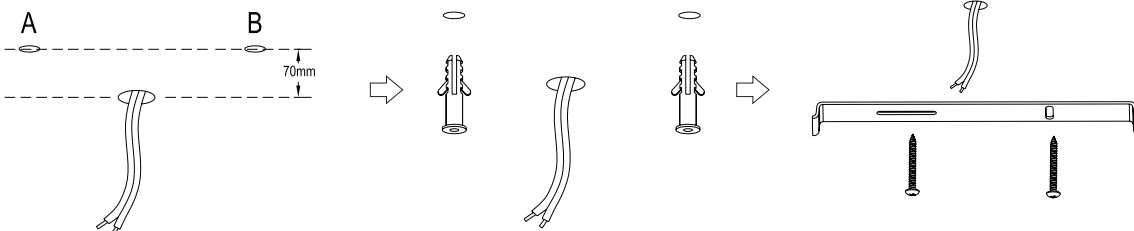
### EN:

1: Fix the mounting bracket.

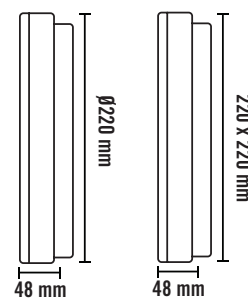
1.1. For cement ceiling: Use the cable outlet as a central point, shift 70 mm and drill two Ø5 mm holes. Attach two extension tubes into the holes.

1.2. Use two Ø4 mm x 30 mm screws into the expansion tubes and fix the bracket to the ceiling.

1.3. For non-cement ceiling: Use two Ø4 mm x 15 mm screws to mount the bracket to the ceiling.



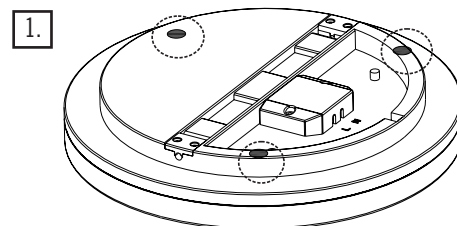
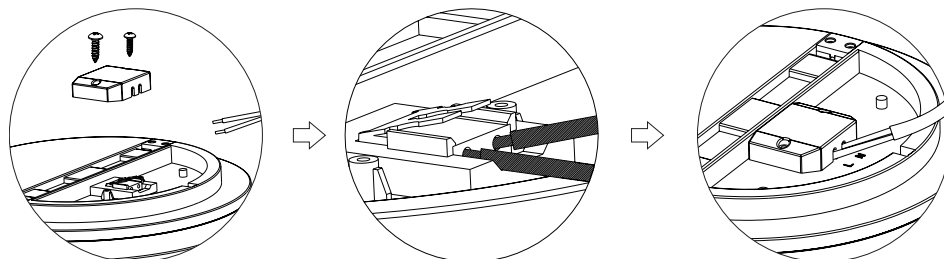
## MÅL / MEASURES



## TILKOBLING / CONNECTION

**NO:** Koble strømkilden inn i "N", "L" i henhold til diagram 1.

**EN:** Connect the power source into the "N", "L" according to the diagram 1.



## TIL INFORMASJON

1. Skal installeres av autorisert el-installatør.

### ADVARSEL

1. Produsenten vil ikke holdes ansvarlig for feil installasjon, gal eller upassende bruk og uautorisert forandring av armaturen. Feil som oppstår på grunn av ovennevnte advarsler kan resultere i alvorlige skader på personer eller brann.

2. Kutt strømtilførsel ved lampeskifte.

## FOR INFORMATION

1. Installation must be performed by a qualified electrician.

### WARNING

1. The manufacturer will not be held responsible for improper installation, faulty or improper use and unauthorized alteration of the luminaire. Errors that occur because of the above warnings can result in serious injury to persons or fire.

2. Cut the power supply before changing the lamp.