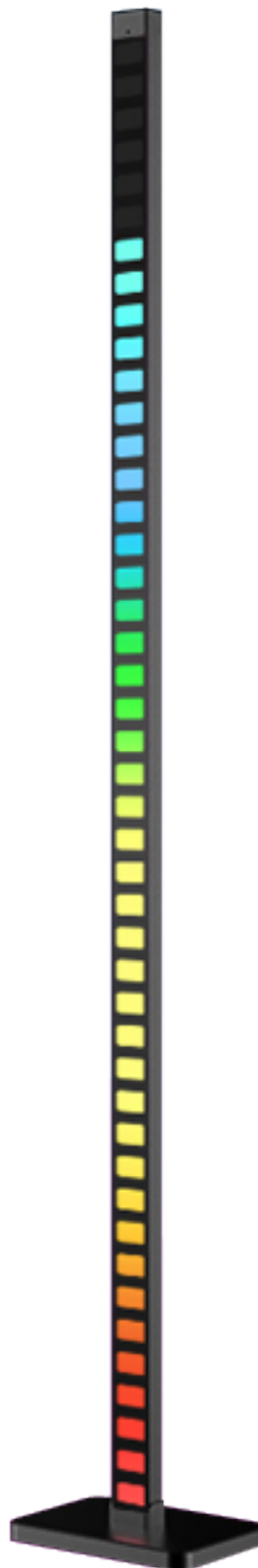
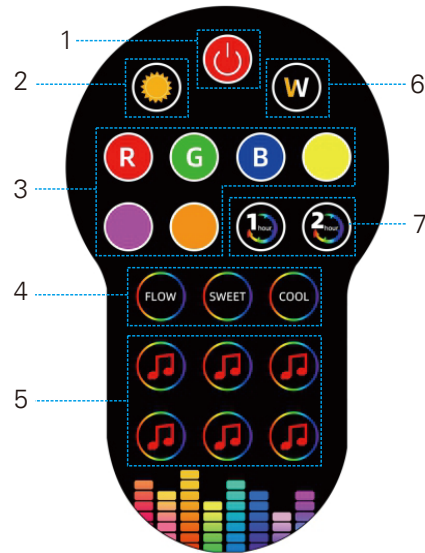


# J&EL MUSIC BAR RGB IP21 TUYA APP



## Remote control instructions

1. Power on/off
2. Dimming
3. 6 Color modes
4. 3 Dynamic modes
5. 6 Kinds of rhythm models
6. White light / warm white switch
7. Timing mode

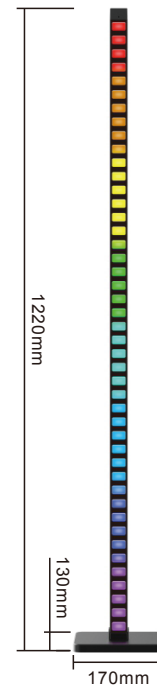


## Product specifications

Product Name:	Music Melody Light
Power Interface:	Metal shell USB-DC5V
Shell Material:	Aluminum alloy+PC+ABS
Product Height:	1.22m
Product Net Weight:	1.15kg
Product Gross Weight:	1.69kg

## Included in the packing

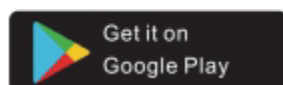
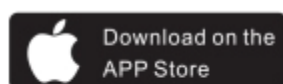
1. Music Rhythm Lamp main body\*3+ connector\*2+base
2. 20-key wireless radio frequency remote control
3. USB-DC power cord
4. Product manual
5. Screwdriver\*1+screw\*5



## APP device connection guide

### Step 1

Scan the QR code with your mobile phone to download the "Smart Life" APP, or search for the name in the application store to download the APP.

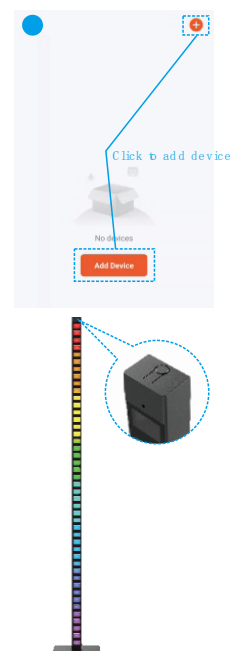


### Step 2

Open the "Smart Life" APP, and turn on the Bluetooth and WiFi of the mobile phone.

Enter the network distribution mode:

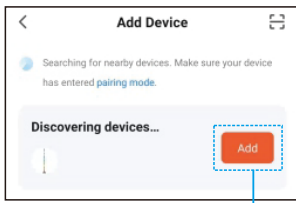
1. After the rhythm light device is powered on, it can automatically connect when the red light flashes.
2. The rhythm light device is turned off → press and hold the power button for more than 3 seconds → the rhythm light turns into a red light flashing, enters the configuration Net mode.



### Step 3

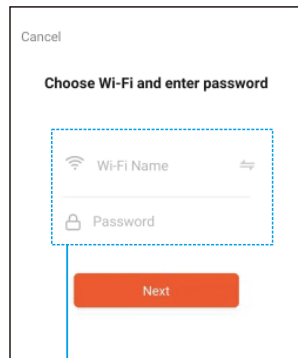
Device connection: 1. Add device — 2. Enter WIFI password — 3. Connect successfully

1



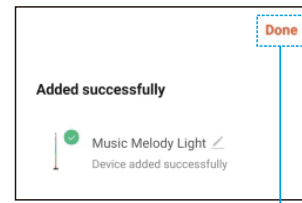
Click add

2



Enter WIFI name and password

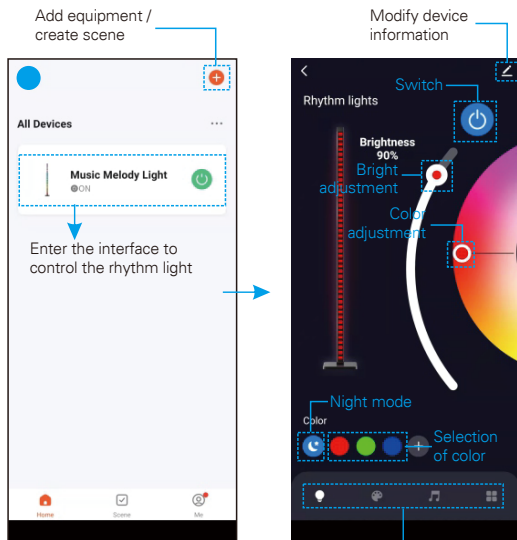
3



Click "Finish" to add successfully

### Page introduction

Main interface

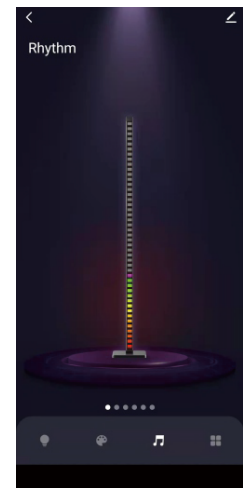


Lighting, Scene, Rhythm, Timing

Scene function, rhythm function



Theme mood: preset 5 flashing modes  
Colorful life: preset 4 light modes



6 preset rhythm modes:  
Rhythm light device built-in microphone to recognize sound

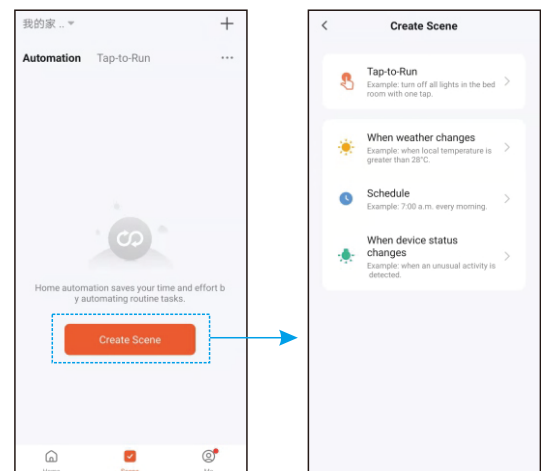
Timing function



Set the power-on color and brightness of the rhythm light

Create the scene

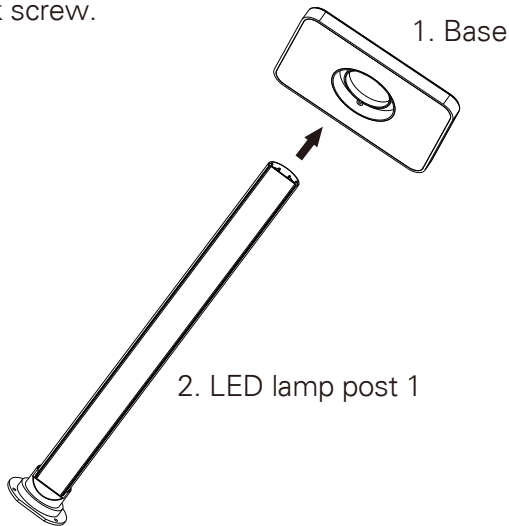
You can create usage scenarios for any device connected to the "Smart Life" APP, and the device will be based on the set related conditions trigger changes.



## Installation steps

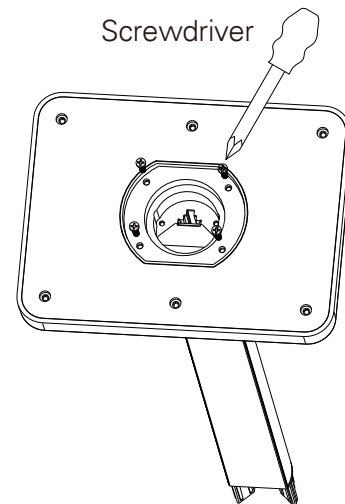
### Step 1

Connect the lamp post 1 to the base, and fix it with the lock screw.



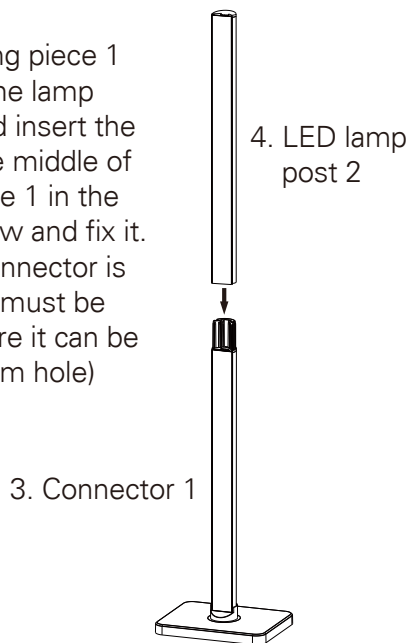
### Step 2

Tighten the 4 screws with the supplied screwdriver.



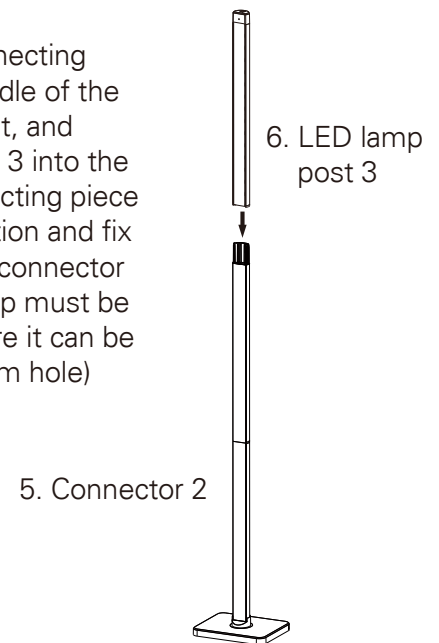
### Step 3

Insert the connecting piece 1 into the middle of the lamp post 1 and fix it, and insert the lamp post 2 into the middle of the connecting piece 1 in the direction of the arrow and fix it. (Note: When the connector is inserted, the bump must be pressed down before it can be fixed in the aluminum hole)



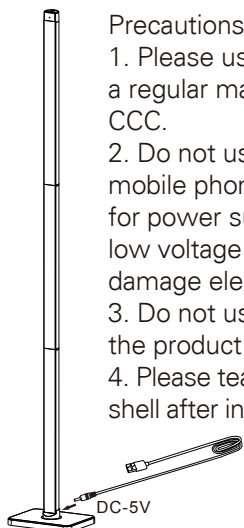
### Step 4

Then insert the connecting piece 2 into the middle of the lamp post 2 and fix it, and insert the lamp post 3 into the middle of the connecting piece 2 in the arrow direction and fix it. (Note: When the connector is inserted, the bump must be pressed down before it can be fixed in the aluminum hole)



### Step 5

Plug the DC power cord (note: standard voltage 5V, standard current 2A)



#### Precautions

1. Please use a 5V/2A output power adapter from a regular manufacturer and certified by the national CCC.
2. Do not use over-voltage, and prohibit the use of mobile phone chargers with fast charging function for power supply. (Rhythm light is designed for 5V low voltage components, too high voltage will damage electronic components)
3. Do not use oil and other volatile liquids to wipe the product.
4. Please tear off the skin care film of the lamp post shell after installation, the effect will be better.