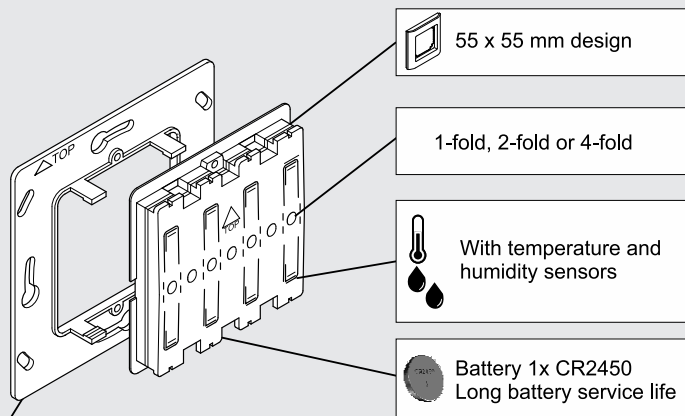


Multifunctional Push-button CTSA-0./04



868.3 MHz

IP20



55 x 55 mm design

1-fold, 2-fold or 4-fold

With temperature and humidity sensors

Battery 1x CR2450
Long battery service life

CMMZ-00/45
(included)



1x



2x

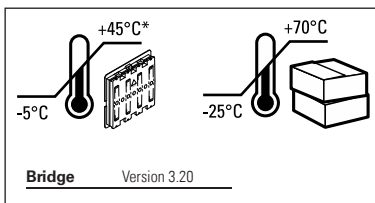


2x

Device	Type
CTSA-01/04	1-fold
CTSA-02/04	2-fold
CTSA-04/04	4-fold

Technical Data / Technische gegevens / Tekniske data / Technische Daten / Technická data

Power supply	
Battery	CR2450, 3 Vdc
Battery Service Life	10 years
Temperature sensor	
Range	0 - 40 °C
Accuracy	± 0.5 °C
Humidity sensor	
Relative humidity range	5- 95%
Accuracy	± 5% rH
Dimensions	
Push-button base	55 x 55 x 12.2 mm (L x W x D)
Mounting plate	70 x 70 x 10 mm (L x W x D)
RF	868.3 Mhz (xComfort compatible)
Max. RF power	25 mW (ERP)



Bridge Version 3.20

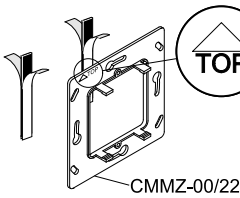


www.eaton.com/xcomfort

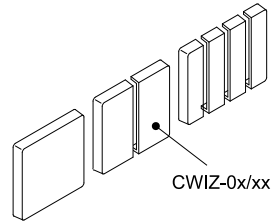
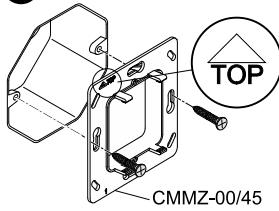


Mounting / Montage / Montering / Montage / Montáž

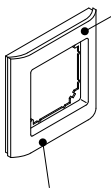
1a



1b



CWIZ-0x/xx



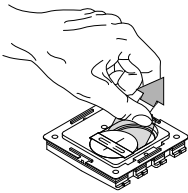
CRAZ-00/0x

Merten	Gira	Busch&Jäger*	Jung	Berker	Siemens	Elko	Kopp
1-M	Standard 55	Carat*	AS	S.1	Delta line	RS16	Alaska
Atelier M	E2	Pur Edelstahl*	A 500	B.1	Delta vita	Plus	
M-Smart	Event	Solo*	A Plus	B.3	Delta miro		
M-Arc	Esprit	Future*	A creation	B.7 Glas	Delta profil**		
M-Star	Profil 55	Future Linear*					
M-Plan	E22	CZ Future*					
M-Plan II		Busch-balance SI					
M-Plan Metall							
M-Plan Glas							

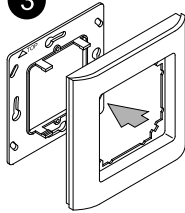
* only with intermediate frame Busch&Jäger

** only with intermediate frame Siemens

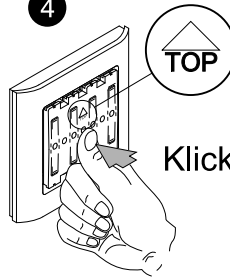
2



3

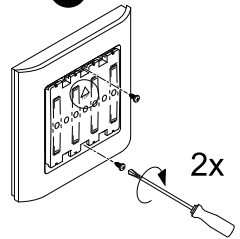


4



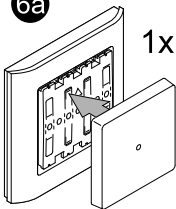
Klick

5



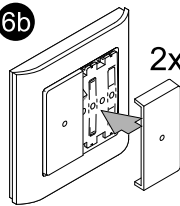
2x

6a



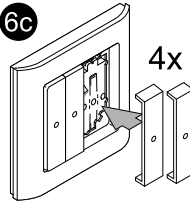
1x

6b

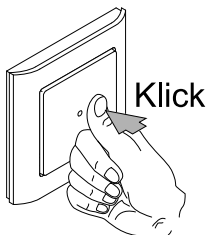
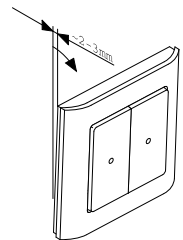


2x

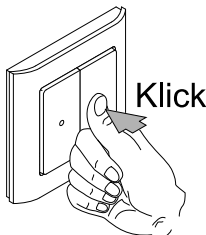
6c



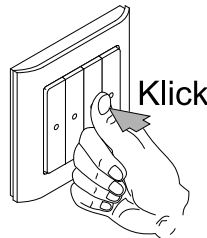
4x



Klick

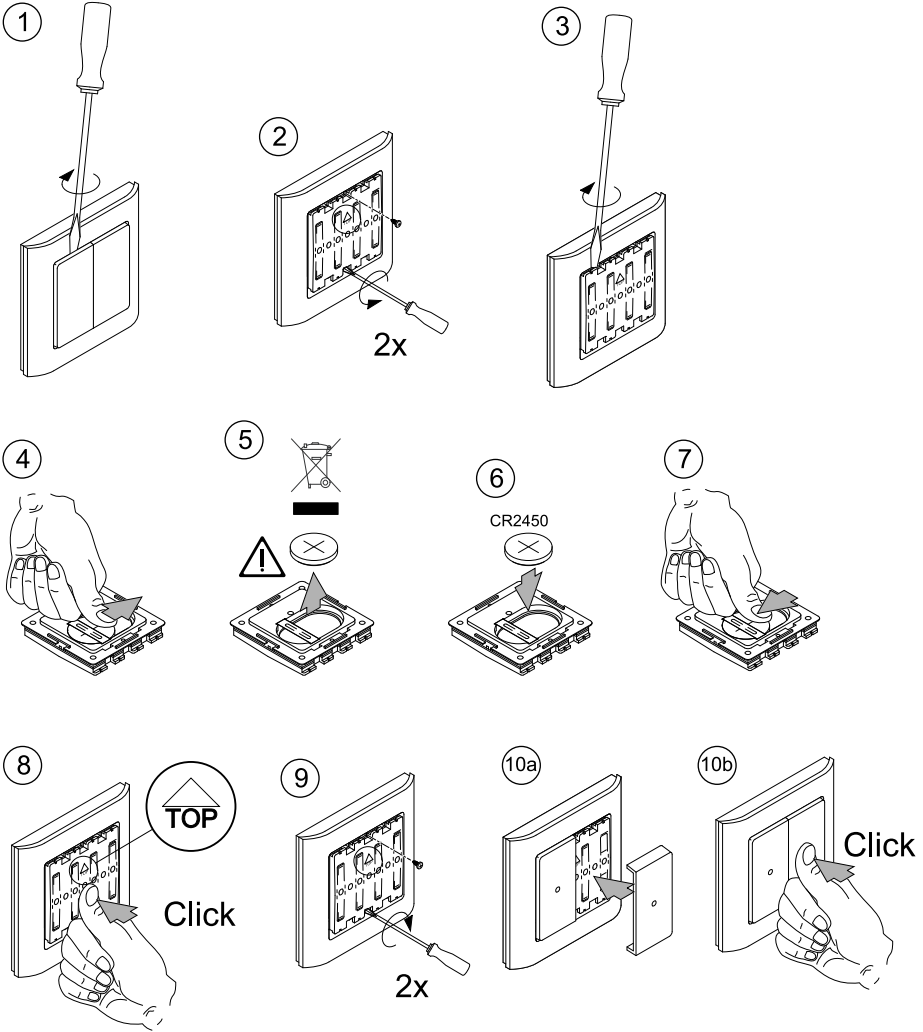


Klick



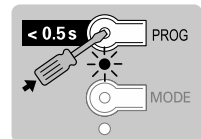
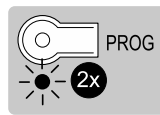
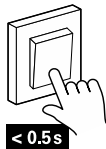
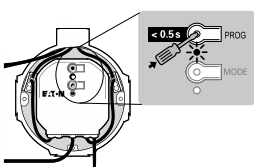
Klick

Replace battery / Batterijen vervangen / Skifte batterier / Batteriewechsel / Výměna baterií

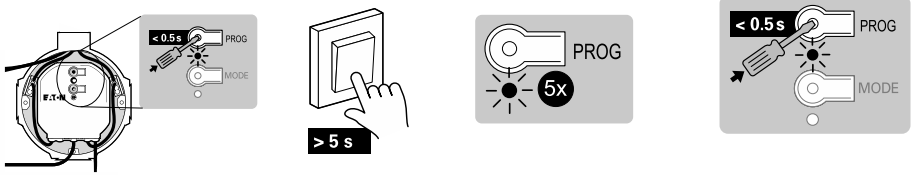


Basic mode

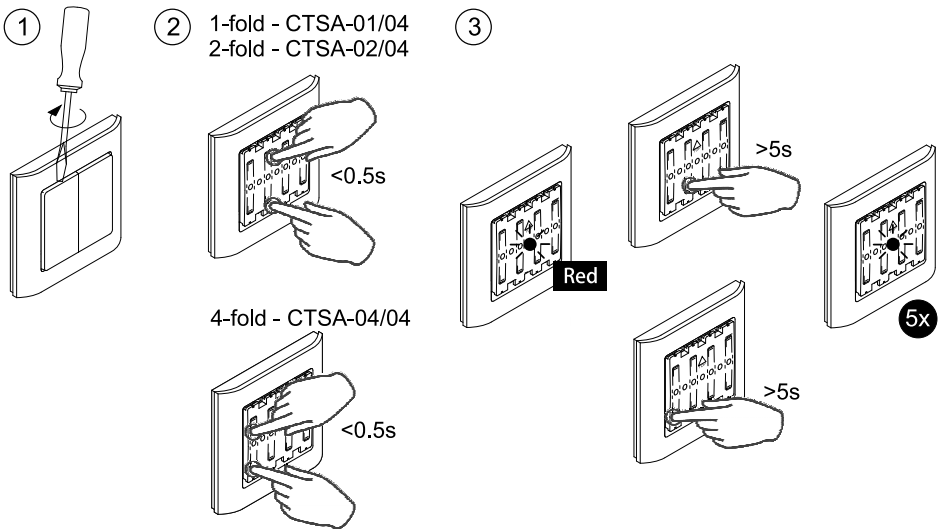
Assign Sensor in Basic Mode / Sensor in Basic Mode toewijzen / Tilknytte i Basic Mode / Zuweisen im Basic Mode / Přiřadit v základním režimu



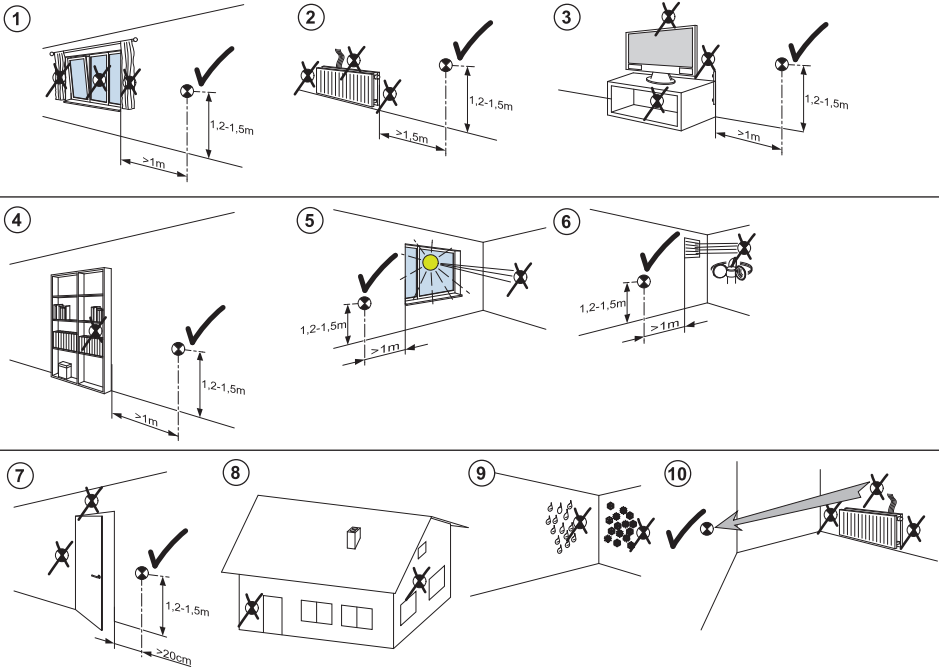
Remove Sensor in Basic Mode / Sensor in Basic Mode verwijderen / Fjerne i Basic Mode / Löschen des Sensors im Basic Mode / Odstranit v základním režimu



Back to factory default / Terug naar fabrieksinstellingen / Tilbake til fabrikkinnstilling / Zurück zu den Werkseinstellungen / Výrobní nastavení



Positioning / Positionering / Plassering / Positionierung / Umístění





Declaration of Conformity

We, EATON Industries (Austria) GmbH
3943 Schrems, Eugenia 1
Austria

declare under our sole responsibility as manufacturer that the product (family)

Eaton - Push Button, CTSA-...

(the declaration of conformity applies to all listed types within our actual product catalogue)

provided that it is installed, maintained and used in the application intended for, with respect to the relevant manufacturers instructions, installation standards and "good engineering practices"

complies with the provisions of Council directive(s):

RED Directive 2014/53/EU

RoHS Directive 2011/65/EU + 2015/863

based on compliance with following standard(s):

EN 300220-2 V3.2.1, EN 301489-1 V2.1.0, EN 301489-3 V2.1.1,
EN 62368-1:2014, EN IEC 63044-5-1:2019, EN IEC 63044-5-2:2019
EN 63000:2018

EU- type examination performed by:
TÜV Austria Services GmbH, Notified Body
1230 Vienna, Deutschstrasse 10, Austria

Affixing date of CE mark: 2003
Doc.Id.: CTSA-..._240222

Gerhard Dischner

Director Operations

Schrems, 24.02.2022

Friedrich Schröder

Director Quality