

## Door/Window Sensor CDWA-01/3..

**Battery CR2**  
Long battery service life




**Selectable sensor behavior:**


Hand icon OR Magnet icon = ON


Magnet icon = ON


**Multi-Color Status LED**


Colors	Type Designation
Warm white	CDWA-01/3a
Bright white	CDWA-01/3b
Grey	CDWA-01/3c
Brown	CDWA-01/3d







  
2x

  
2x

  
1x

  
1x

  
1x

  
5x

### Technical Data / Technische gegevens / Tekniske data / Technische Daten / Technická data

Power supply	Battery, CR2 3 Vdc
Battery Service Life	>5 years (TYP)
Behavior sensor	ON if closed (factory default) ON if open (selectable)
Max. Distance	Fe < 10 mm (sensor/magnet) None Fe < 15 mm (sensor/magnet)
Button Operation	Set sensor behavior
LED	Multi-Color operation status
Dimensions	
Magnet	55 x 12 x 12 mm (H x W x D)
Sensor	103 x 19 x 29 mm (H x W x D)
RF	868.3 Mhz (xComfort compatible)
Max. RF power	25 mW (ERP)

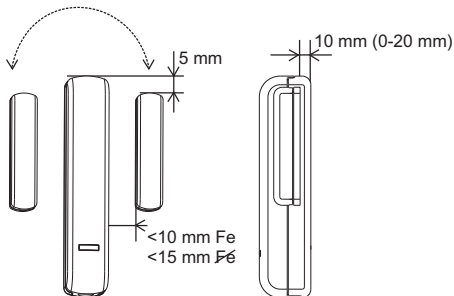
<b>MRF</b>	Version 2.64
<b>RM</b>	Version V41c
<b>SHC-RF</b>	Version 2.21
<b>ECI-RF</b>	Version 2.10
<b>USB-RF</b>	Version 2.10



[www.eaton.eu/xcomfort](http://www.eaton.eu/xcomfort)

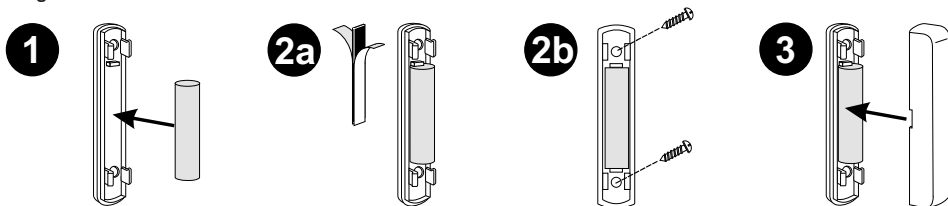


**Magnet positioning** / Positionering magneet / Plassering av magneten / Positionierung des Magneten / Umístění magnetu

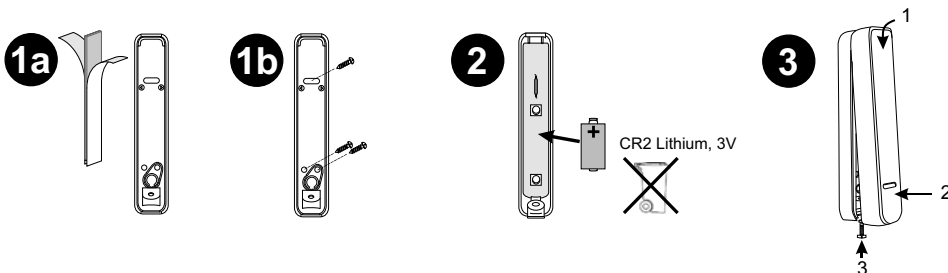


**Mounting** / Montage / Montering / Montage / Montáž:

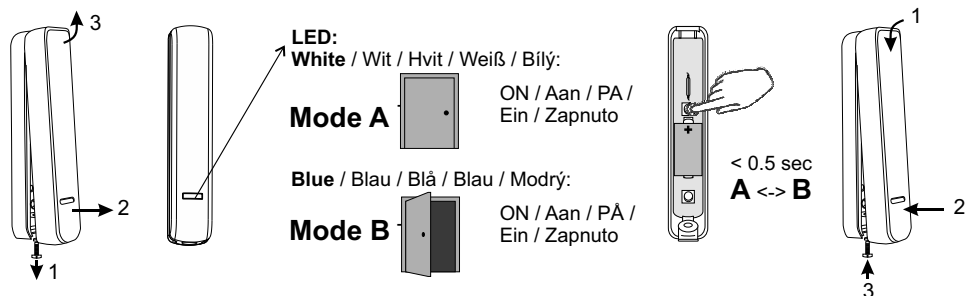
Magnet



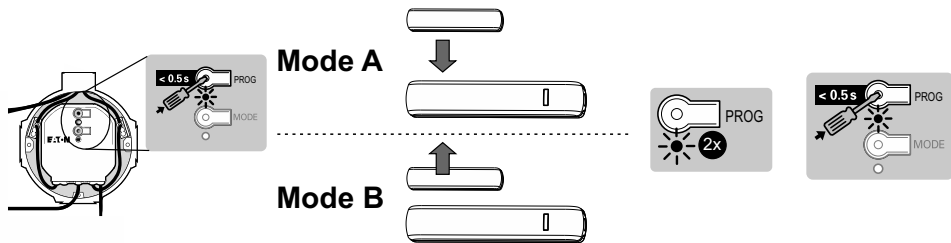
Sensor



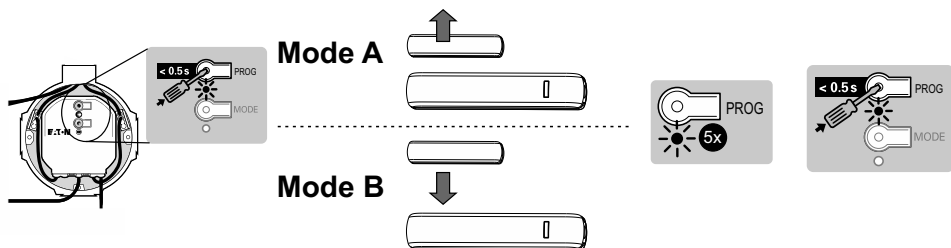
**Change contact type** / Contact type wijzigen / Endre kontakttyp / Kontakttyp ändern / Změnit typ kontaktu



**Assign Sensor in Basic Mode / Sensor in Basic Mode toewijzen / Tilknytte i Basic Mode / Zuweisen des Sensors im Basic Mode / Přičadit v základním režimu**



**Remove Sensor in Basic Mode / Sensor in Basic Mode verwijderen / Fjerne i Basic Mode / Löschen des Sensors im Basic Mode / Odstranit v základním režimu**



**LED during operation / LED tijdens bedrijf / LED under drift / LED im Normalbetrieb / LED během provozu**

*During 20 sec after status change / Gedurende 20 seconden na statuswijziging / I løpet av 20 sek etter statusendring / Nach Statusänderung für 20 Sekunden / Během 20 sekund po změně stavu*

**Blue flashing**

Blaauw knipperend  
Blå blinkende  
Blaues Blinken  
Modrá blikání

**No assignment**

Geen toekenning  
Ingen oppgave  
Keine Zuordnung  
Žádná přiřazení

**Orange flashing**

Oranje knipperend  
Oransje blinkende  
Oranges Blinken  
Oranžová blikání

**Bad RF communication**

Slechte RF-communicatie  
Dårlig RF-kommunikasjon  
Schlechte RF-Kommunikation  
Špatná RF komunikace

**Red steady**

Rood continue  
Rød, permanent  
Rotes Dauerlicht  
Červená stabilní

**Replace battery**

Vervang de batterij  
Bytt batteri  
Batterie wechseln  
Vyměnit baterii

**Red flashing**

Rood knipperend  
Rød blinkende  
Rotes Blinken  
Červená blikání

**No RF communication**

Geen RF-communicatie  
Ingen RF-kommunikasjon  
Keine RF-Kommunikation  
Žádná RF komunikace

*At status change, when activated in MRF / Bij statusverandering, indien geactiveerd met MRF / Ved statusendring, når aktivert med MRF / Bei Statusänderung wenn mit MRF aktiviert / Při změně stavu, když je aktivován MRF*

**Green short flash**

Groene korte flits  
Kort grønt blink

**RF communication okay**

RF-communicatie in orde  
RF-kommunikasjon ok

Grünes kurzes Blinken  
Zelené krátké bliknutí

RF-Kommunikation in Ordnung  
RF komunikace je v pořádku



# Declaration of Conformity

We, EATON Industries (Austria) GmbH  
3943 Schrems, Eugenia 1  
Austria

declare under our sole responsibility as manufacturer that the product (family)

## Eaton - Door Window Sensor

### CDWA-01/3x

(the declaration of conformity applies to all listed types within our actual product catalogue)

provided that it is installed, maintained and used in the application intended for, with respect to the relevant manufacturer's instructions, installation standards and "good engineering practices"

complies with the provisions of Council directive(s):

RED Directive 2014/53/EU

RoHS Directive 2011/65/EU

based on compliance with following standard(s):

EN 301489-3 V2.1.1, EN 300220-2 V3.2.1, EN 63044-5-1:2018, EN 63044-5-2:2017, EN 62368-1:2014, EN 62479:2010, EN 50581:2012



  
Fernando Ceccarelli

Senior Vice President  
General Manager

01.04.2019

  
Friedrich Schröder

Director Quality  
& Systems

Affixing date of CE mark: 2019

Doc.Id.: CDWA-013x\_010419