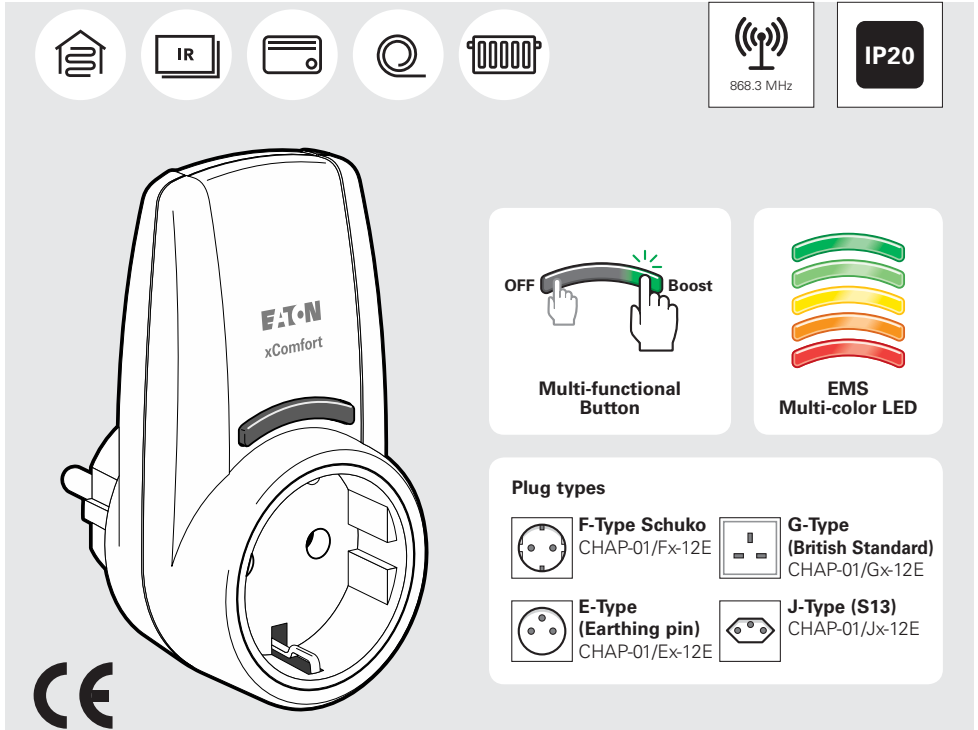
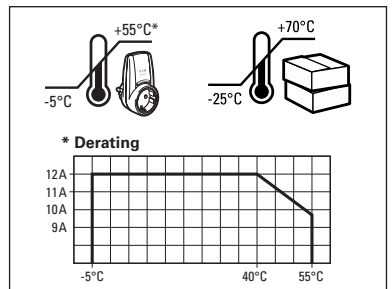


Heating Plug 230 VAC / 12 A CHAP-01/xx-12E



Technical Data / Technische gegevens / Tekniske data / Technische Daten / Technická data

| | |
|--------------------|--------------------------------------|
| Power supply | 230 VAC +10% -15%, 50 Hz |
| Power standby | 190mW (TYP) |
| Load | RLC, 12A (at 40°C, Derating*) |
| Technology | Eaton Patented Hybrid Zero-cross |
| Switching lifetime | 5×10 ⁷ (TYP) |
| Inrush current | 500A@200us, 300A@1ms, 200A@3ms (TYP) |
| EMS | 3W to 2760W, 5% (>3W) |
| RF | 868,3MHz (xComfort compatible) |
| Button Operation | On / Off / Boost |
| Button LED | Multi-Color EMS power consumption |
| Profiles | 5 PWM Heating Profiles |
| Dimensions | 100.3 x 52 x 56.9 mm (H x W x D) |

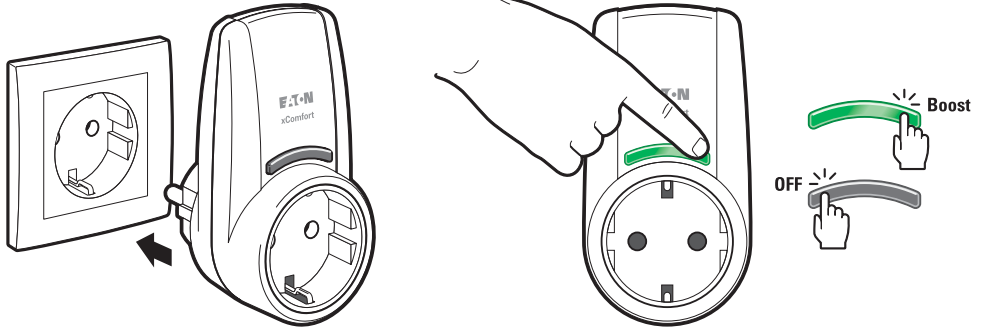


| | |
|---------------|--------------|
| MRF | Version 2.60 |
| RM | Version V41c |
| SHC-RF | Version 2.21 |
| ECl-RF | Version 2.01 |
| USB-RF | Version 2.10 |

Heating Plug

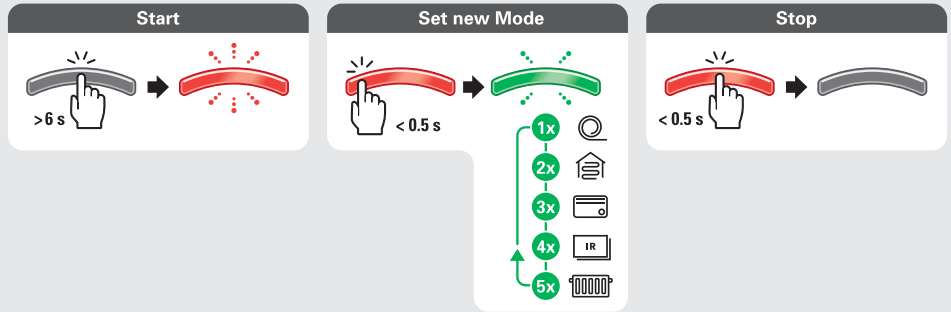
230VAC / 12A

Operation

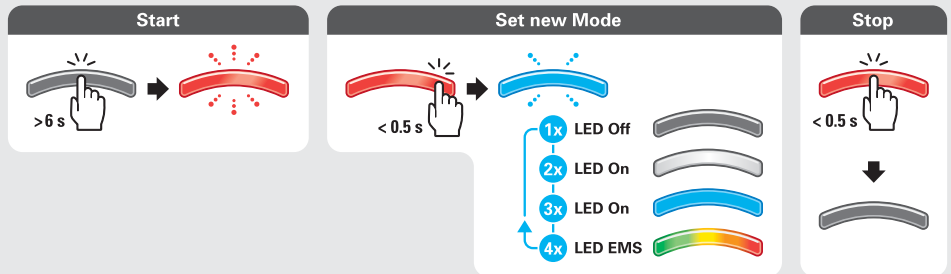


Programming

Set Heating Profile / Verwarmingsprofiel instellen / Stille inn varmeprofil / Einstellen des Heizprofil / Nastavení topného profilu



Button behaviour / Knopgedrag / Tastenfunktion / Knapp virkemåte / Funkce tlačítka



Notification / Notificatie / Benachrichtigung / Meldung / Zpráva



Button indication

LED Off Mode

(Off)



LED On Mode

(white)



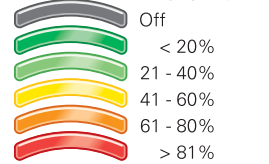
LED On Mode

(blue)



LED EMS Mode

(multi-color)



Actuator Off



Load error



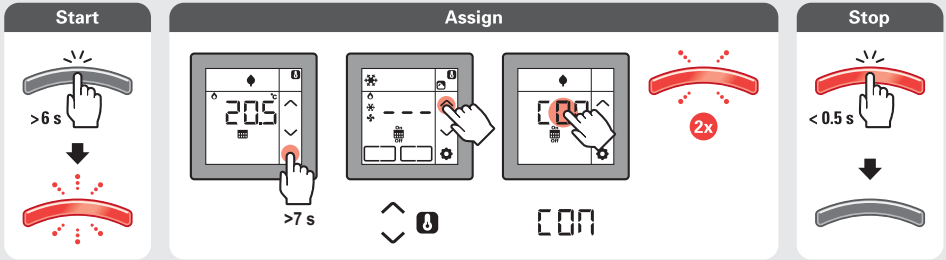
Overload



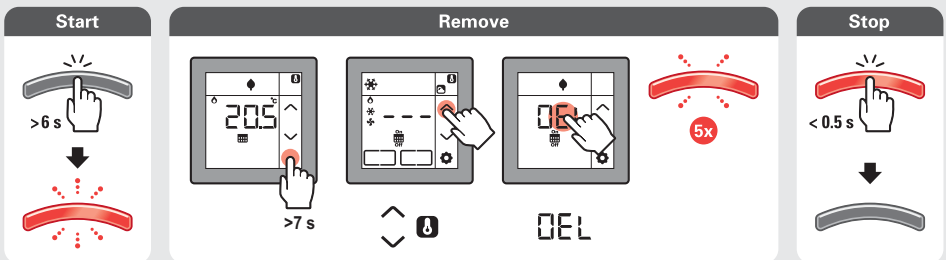
Emergency



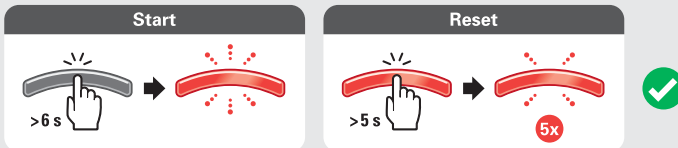
Assign Sensor in Basic Mode / Sensor in Basic Mode toewijzen / Tilknytte i Basic Mode / Zuweisen im Basic Mode / Přřadit v základním režimu



Remove Sensor in Basic Mode / Sensor in Basic Mode verwijderen / Fjerne i Basic Mode / Im Basic Mode löschen / Odstranit v základním režimu



Back to factory default / Terug naar fabrieksinstellingen / Tilbake til fabrikkinnstillinger / Zurück zu den werkseitigen Standard / Zpět na tovární hodnoty





Declaration of Conformity

We, EATON Industries (Austria) GmbH
3943 Schrems, Eugenia 1
Austria

declare under our sole responsibility as the manufacturer that the product (family)

Eaton - Plug in adapter - heating, CHAP-01/x5-

(the declaration of conformity applies to all listed types within our actual product catalogue)

provided that it is installed, maintained and used in the application intended for, with respect to the relevant manufacturers instructions, installation standards and "good engineering practices"

complies with the provisions of Council directive(s):

RED Directive 2014/53/EU

RoHS Directive 2011/65/EU

based on compliance with following standard(s):

EN 300 220-2 V3.1.1, EN 300 489-1 V1.9.2, EN 301 489-1 V2.1.0, EN 301 489-3 V1.6.1, EN 301 489-3 V2.1.1, EN 50491-5-1:2010, EN 50491-5-2:2010, EN 60669-2-5:2017, EN 50581:2012

EU- type examination performed by:
TUV Austria Services GmbH, Notified Body
1230 Vienna, Deutschstrasse 10, Austria

Affixing date of CE mark: 2018
Doc.id.: CHAP-01x5_-010318

Fernando Ceccarelli

Senior Vice President
General Manager

01.03.2018

Friedrich Schröder

Director Quality
& Systems

