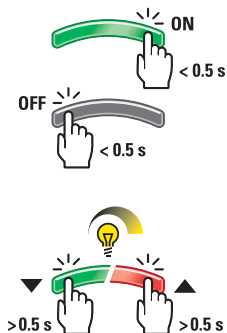
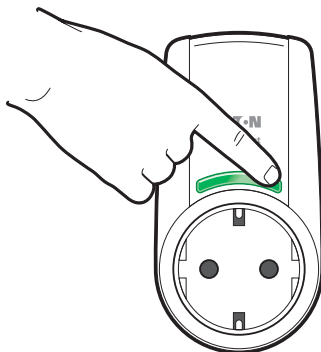
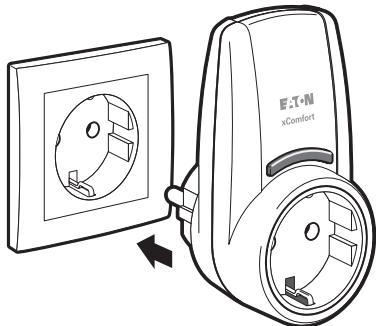


Dimming Plug

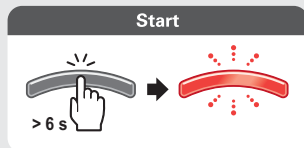
230VAC / 250W

Operation

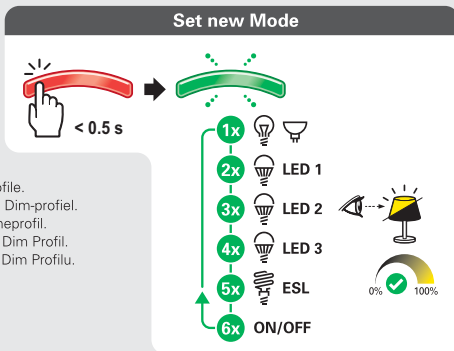


Programming

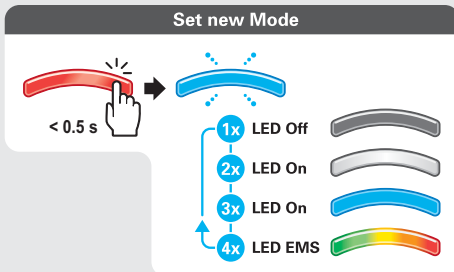
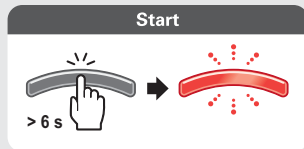
Set Dim Profile / Dim Profil instellen / Stille inn dimmeprofil / Einstellen des Dim Profil / Nastavení Dim profil



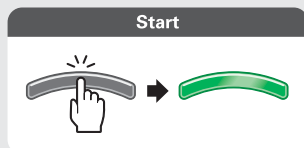
See LED compatibility list for correct LED Dim Profile.
 Zie de LED-compatibiliteitslijst voor het juiste LED Dim-profiel.
 Se LED-kompatibiliteitslijsten for korrekt LED dimmeprofil.
 Siehe LED-Kompatibilitätsliste für die korrekte LED Dim Profil.
 Viz LED seznam kompatibilních pro správnou LED Dim Profilu.



Button behaviour / Knopgedrag / Tastenfunktion / Knapp virkemåte / Funkce tlačítka



Notification / Notificatie / Benachrichtigung / Melding / Zpráva



or Controller
 of Controller
 oder Controller
 eller Controller
 nebo řídicí jednotka

Button indication

LED Off Mode

(Off)



LED On Mode

(white)



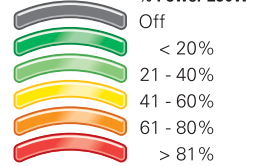
LED On Mode

(blue)



LED EMS Mode

(multi-color)



Actuator Off



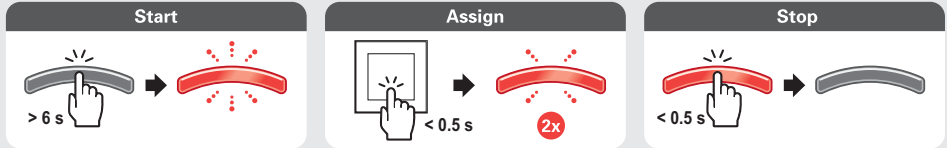
Load error



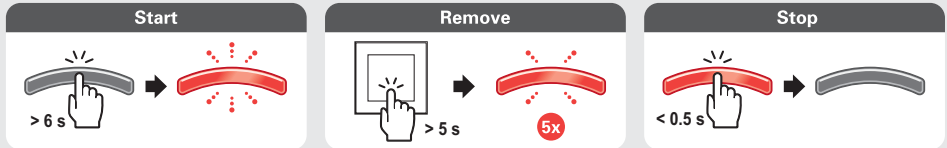
Overload



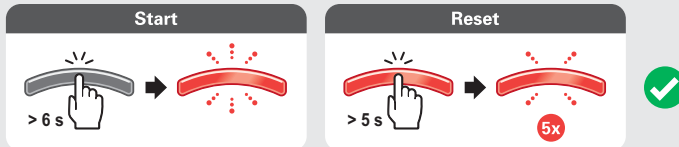
Assign Sensor in Basic Mode / Sensor in Basic Mode toewijzen / Tilknytte i Basic Mode / Zuweisen im Basic Mode / Přříadit v základním režimu



Remove Sensor in Basic Mode / Sensor in Basic Mode verwijderen / Fjerne i Basic Mode / Im Basic Mode löschen / Odstranit v základním režimu



Back to factory default / Terug naar fabrieksinstellingen / Tilbake til fabrikkinnstillinger / Zurück zu den werkseitigen Standard / Zpět na tovární hodnoty





Declaration of Conformity

We, EATON Industries (Austria) GmbH
3943 Schrems, Eugenia 1
Austria

declare under our sole responsibility as the manufacturer that the product (family)

Eaton - Plug in adapter - dimming, CDAP-01/xx-1E

(the declaration of conformity applies to all listed types within our actual product catalogue)

provided that it is installed, maintained and used in the application intended for, with respect to the relevant manufacturers instructions, installation standards and "good engineering practices"

complies with the provisions of Council directive(s):

RED Directive 2014/53/EU

RoHS Directive 2011/65/EU

based on compliance with following standard(s):

EN 301489-3 V2.1.1, EN 300220-2 V3.1.1, EN 50491-5-1:2010, EN 50491-5-2:2010, EN 62479:2010, EN 50428:2005 + A1:2007 + A2:2009, EN 55015:2013, EN 61547:2009, IEC 60884-2-5:1995, EN 50581:2012

EU- type examination performed by:
TÜV Austria Services GmbH, Notified Body
1230 Vienna, Deutschstrasse 10, Austria

Affixing date of CE mark: 2018
Doc.Id.: CDAP-01xx-1E_270718


Ferdinando Ceccarelli

Senior Vice President
General Manager

27.07.2018


Friedrich Schröder

Director Quality
& Systems

