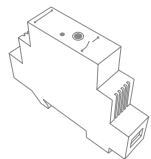


Smart Relay 16A DIN



INSTALLATION MANUAL

Version 1.1



Product description

Develco Products' Smart Relay 16A DIN consists of a DIN rail unit with built-in relay. The Smart Relay communicates via Zigbee and enables the user to configure machines and appliances in clusters, providing the operator with the ability to control groups of units, instead of having to control each device separately.

The Smart Relay also includes built-in power metering functionality, which enables the user to monitor the power consumption of each group of units in the building, resulting in increased awareness of energy consumption and waste. All data loggings are transmitted to a data concentrator.

Precautions

WARNING: Electrical equipment should only be installed, accessed, serviced, and maintained by qualified electrical personnel. Working with high voltage is potentially lethal. Persons subjected to high voltage may suffer cardiac arrest, burn injuries, or other severe injuries. To avoid such injuries, make sure to disconnect the power supply before you start the installation.

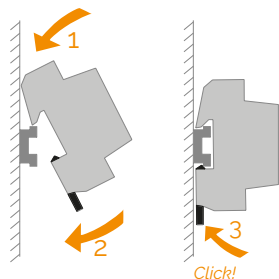
WARNING: For safety reasons, it is recommended that the equipment is installed in a way that makes it impossible to reach or touch the terminal blocks by accident. The best way to make a safe installation is to install the unit in an enclosure. Further, access to the equipment should be limited through use of lock and key, controlled by qualified electrical personnel.

WARNING: The Smart Relay must always be protected by fuses on the incoming side.

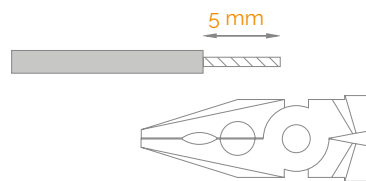
- Be careful that no liquid gets into the Smart Relay since it may damage the equipment.
- Do not remove the product label as it contains important information.
- Avoid switching maximum loads frequently on or off, in order to sustain a long life

Getting started

1. Disconnect the main power. For the duration of electrical work, electricity must be disconnected from the main switch of the property by removing the fuses for the work area.
2. Place the Smart Relay on the DIN-rail and make sure it snaps onto it.

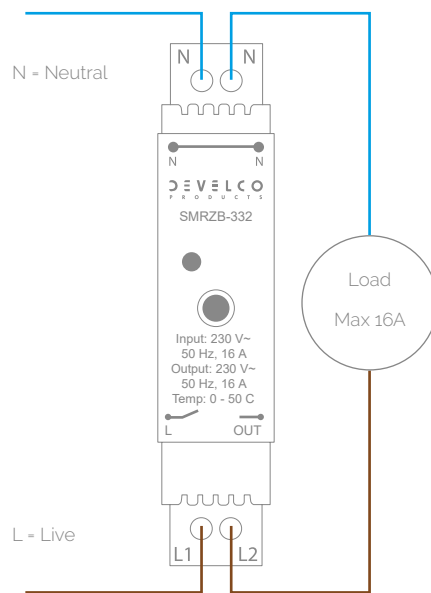


3. Strip the cable insulation to 5 mm



4. Connect appropriate cables as shown under wiring diagram and tighten the screws (0.8 Nm)
5. Turn on the main power
6. Smart Relay will now start searching (up to 15 minutes) for a Zigbee network to join
7. Make sure that the Zigbee network is open for joining devices and will accept the Smart Relay
8. While the Smart Relay is searching for a network, the LED is flashing red
9. When the LED stops flashing, the Smart Relay has successfully joined the Zigbee network
10. The Smart Relay's output is active when the green LED is on

Wiring diagram



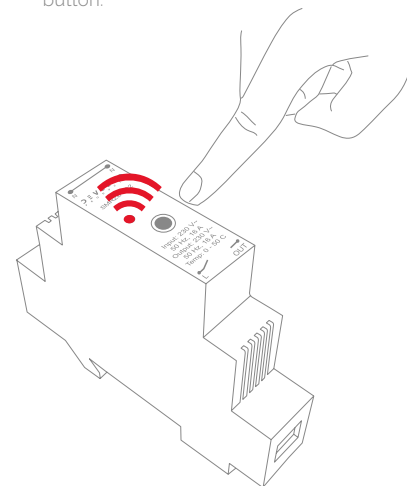
Connect Blue (Neutral) and Brown (Live) to 230VAC / 50Hz

Resetting

Resetting is needed if you want to connect your Smart Relay to another gateway, if you need to perform a factory reset to remove abnormal behaviour, or if you need to reset accumulative registers and logs.

STEPS FOR RESETTING

1. Press and hold down the button on the device.
2. Hold the button down until the red LED flashes continuously, then release the button.



3. After releasing the button, the red LED will stay on for 2-5 seconds. During that time, the device must not be switched off or unplugged

Fault finding

- In case of a bad or weak signal, change the location of your gateway or insert a Zigbee router as a range extender.
- If the search for a gateway has timed out, a short press on the button will restart it

Modes

SEARCHING GATEWAY MODE

The red LED is flashing every second

ON MODE

Green LED means that the Smart Relay output is active (relay is on). The relay can be switched on and off by pushing the button.

OFF MODE

When there is no light in the LED, the Smart relay output is inactive.

Other information

- The Smart Relay will automatically switch off if the load exceeds 16 A or the internal temperature gets too high
- In case of power failure, the device will restore itself to the on/off status it had before the power failure

Disposal

Dispose the product properly at the end of life. This is electronic waste which should be recycled.

CE certification

The CE mark affixed to this product confirms its compliance with the European Directives which apply to the product and, in particular, its compliance with the harmonized standards and specifications.



IN ACCORDANCE WITH THE DIRECTIVES

- Radio & Telecommunications Terminal Equipment Directive 2014/53/EU
- Low Voltage Directive (2014/35/EU)
- EMC Directive 2014/30/EU
- RoHS Directive 2011/65/EU



Other certifications

- Zigbee Home Automation 1.2 certified



All rights reserved.

Develco Products assumes no responsibility for any errors, which may appear in this manual. Furthermore, Develco Products reserves the right to alter the hardware, software, and/or specifications detailed herein at any time without notice, and Develco Products does not make any commitment to update the information contained herein. All the trademarks listed herein are owned by their respective owners.

Distributed by Develco Products A/S
Tangen 6
8200 Aarhus N
Denmark
www.develcoproducts.com