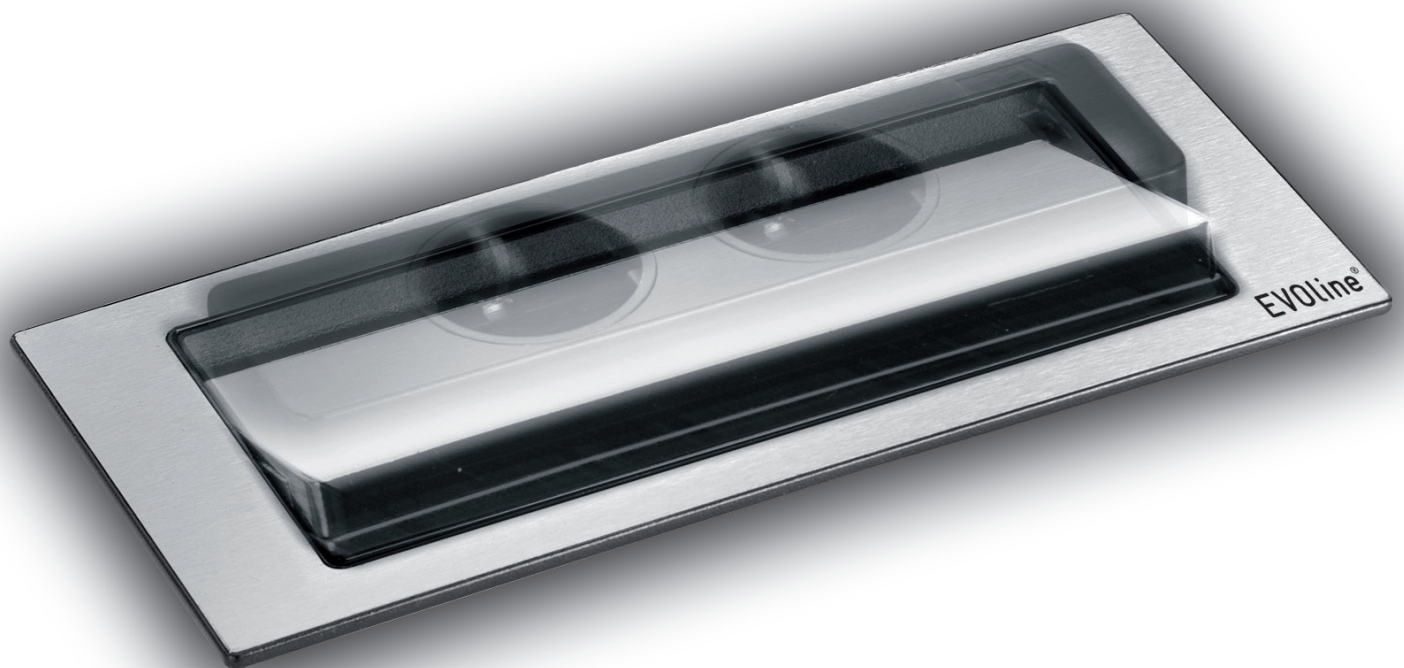


EVoline®
ePlace Design

BackFlip



NEW


schulte
elektrotechnik

invented and made by
Schulte Elektrotechnik,
Lüdenscheid, Germany.



Backward somersault on the worktop.

Always available, but never in your way. In closed position EVOLine BackFlip is just a thin plate on the worktop. With the touch of a finger it turns 180 degrees and shows its useful side: USB Charger and sockets sit high above the worktop providing greater protection against liquid spillages. Nevertheless the mounting depth is 53 mm only allowing installation on top of a drawer or other devices.

Description	Image	Specification	Order No.
<p>EV0line BackFlip for worktops with max. thickness of 40 mm. Total installation depth: 53 mm</p> <p>Equipped with: 2x socket VDE with contact protection 1x USB Charger Typ A, charging function only without PC connection for standard devices with USB connection</p> <p>fixed supply cable 2,5 m with end splices plug supplied unattached</p>		<p>Finish: Solid stainless steel, brushed Rotating part: black plastic</p> <p>Other finishes available on request</p> <p>The charging function cannot be guaranteed for all devices due to the large amount of different suppliers.</p>	1592 7100 0100

A finger
touch
is enough



With
USB
Charger



Schulte Elektrotechnik GmbH & Co KG

Postfach 27 08 / 27 32
58477 Lüdenscheid
Germany

Jüngerstraße 21
58515 Lüdenscheid
Germany

Phone +49 23 51 / 94 81 - 0
Fax +49 23 51 / 4 26 58
e-mail info@schulte.com
Internet www.evoline.com

