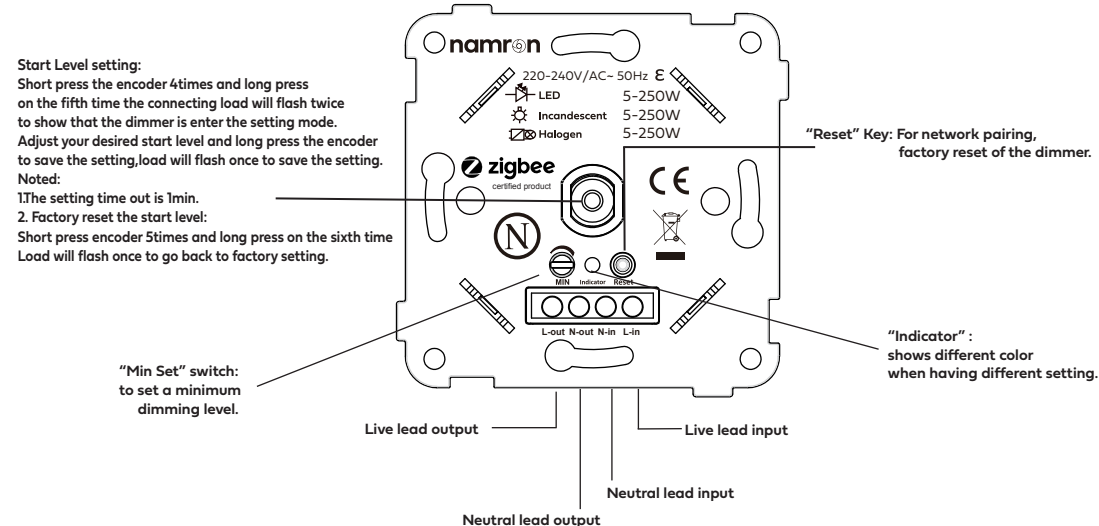


Namron 2POL ZIGBEE DIMMER 250W



Important: Read All Instructions Prior to Installation

Function introduction



Product Data

Input Voltage	Output Voltage	Output Current	Allowed Inrush Current	Size(LxWxH)
220-240V AC	220-240V AC	1.13A max	Cold Start 63A max	84*84*46.65mm

Compatible Load Types			
Load Symbol	Load Type	Maximum Load	Remarks
	Dimmable LED lamps	250W/VA	Due to variety of LED lamp designs, maximum number of LED lamps is further dependent on power factor result when connected to dimmer.
	Dimmable LED drivers	250W/VA	Maximum permitted number of drivers is 250 W divided by driver nameplate power rating.
	Incandescent lighting, HV Halogen lamps	250W/VA	
	Low voltage halogen lighting with electronic transformers	250W/VA	

- ZigBee AC phase cut dimmer based on latest ZigBee 3.0 protocol
- 220V-240V AC Input and Output Voltage
- Supports resistive loads and capacitive loads
- Input and Output with Screw Terminals, Safe and Reliable
- Trailing edge control
- Enables to control ON/OFF and light intensity of connected triac dimmable led light or led driver
- ZigBee end device that supports Touchlink commissioning
- Can directly pair to a compatible ZigBee remote via Touchlink without coordinator
- Supports self-forming zigbee network without coordinator and add other devices to the network
- Supports find and bind mode to bind a ZigBee remote
- Compatible with European trendy ZigBee gateway products
- Mini Size, Easy to be Installed into a standard 86*86mm wall box
- Radio Frequency : 2.4GHz
- Waterproof grade: IP20

Safety & Warnings

- DO NOT install with power applied to device.
- DO NOT expose the device to moisture.
- DO NOT open the dimmer in case any damages that out of repair.

ZigBee Clusters the device supports are as follows:

Input Clusters

- 0x0000: Basic
- 0x0003: Identify
- 0x0004: Groups
- 0x0005: Scenes
- 0x0006: On/off
- 0x0008: Level Control
- 0x0b05: Diagnostics

Output Clusters

- 0x0019: OTA

Operation

1. Do wiring according to connection diagram correctly.

2. This ZigBee device is a wireless receiver that communicates with a variety of ZigBee compatible systems. This receiver receives and is controlled by wireless radio signals from the compatible ZigBee system.

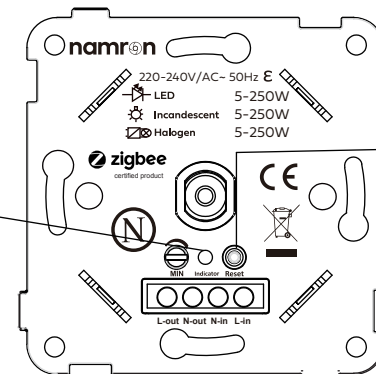
3. Zigbee Network Pairing through Coordinator or Hub (Added to a Zigbee Network)

Step 1: Remove the device from previous zigbee network if it has already been added to, otherwise pairing will fail. Please refer to the part "Factory Reset Manually".

Step 2: From your ZigBee Controller or hub interface, choose to add lighting device and enter Pairing mode as instructed by the controller.

Step 4:

The Blue indicator will stop flashing and solid on for 10s then the device will appear in your controller's menu and can be controlled through controller or hub interface.



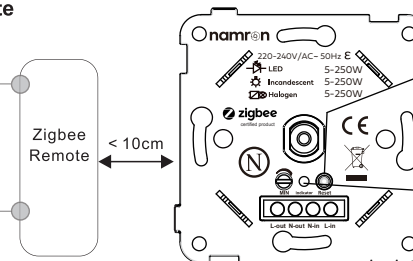
Step 3:

Double Press the reset button to activate the network pairing mode (The blue indicator light is flashing), network pairing mode will last for 15 minutes once timeout repeat this step.

4. TouchLink to a Zigbee Remote

Step 3: Bring the remote or touch panel within 10cm of the lighting device.

Step 4: Set the remote or touch panel into Touchlink commissioning, please refer to corresponding remote or touch panel manual to learn how.



Step 1: Short press "Reset" button 4 times.

Step 2: The Green indicator will start flashing to show that the device is in touchlink commissioning. 180s timeout repeat this step.

Step 5: The connecting lights will start flashing to indicate the pairing processing.

Once paired both the connecting lights and the green indicator light will stop flashing and you can control the lights by the remote.

Note : 1) Directly Touchlink(both not added to a Zigbee network), each device can link with 1 remote.

2) Touchlink after both added to a Zigbee network, each device can link with max.30 remotes.

3) For Hue Bridge & Amazon Echo Plus, add remote and device to network first then Touchlink.

4) After Touchlink, the device can be controlled by the linked remotes.

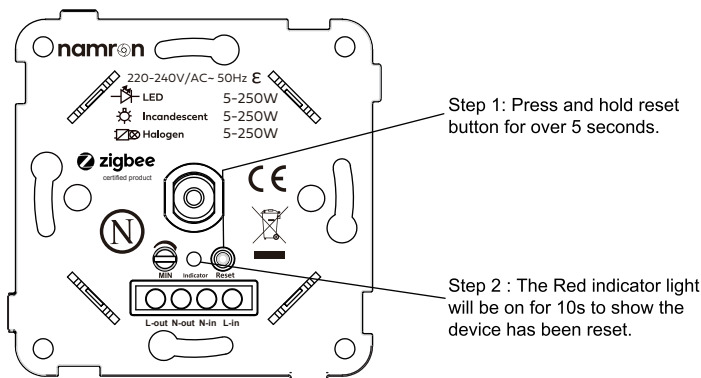
6. Remove from a zigbee network.

Short press the reset button 3 times, the purple indicator light will flashing.

The purple indicator will be stop flashing and solid on for 10s to show successful remove. 180S timeout repeat this step.

6. Factory Reset Manually

Note: All configuration parameters will be reset after the device is reset or removed from the network.

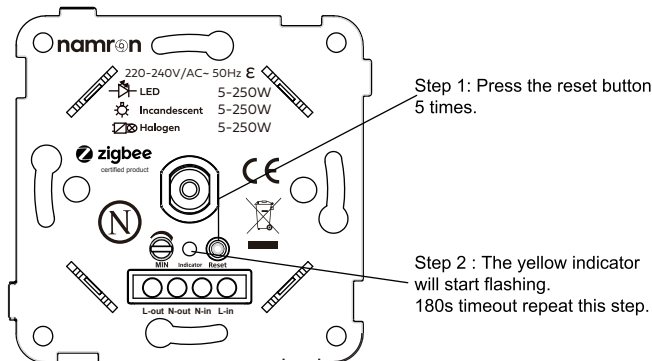


7. Find and Bind Mode

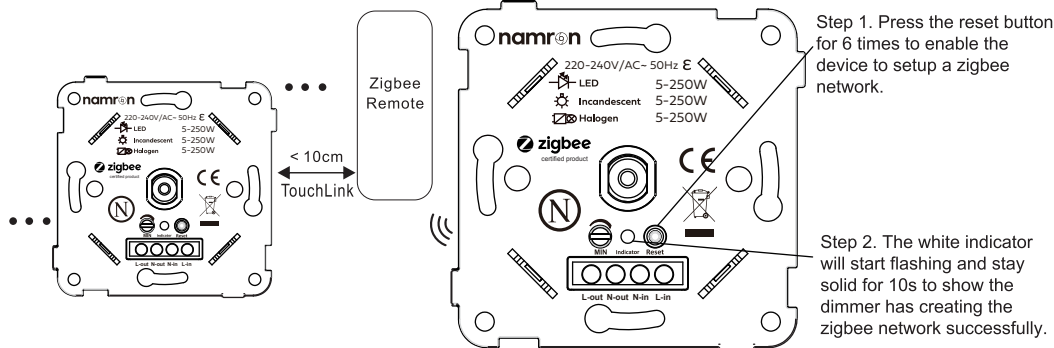
Note: Make sure the device and remote already added to the same zigbee network.

Step 3: Set the remote or touch panel (target node) into find and bind mode, and enable it to find and bind initiator, please refer to corresponding remote or touch panel manual.

Step 4: There shall be indication on the remote or touch panel that it bind the device successfully and can control it then to learn how.



8. Setup a Zigbee Network & Add Other Devices to the Network(No Coordinator Required)



Step 3 : Press the reset button for 7 times to allow other devices to be added into the network. The red indicator light will be flashing continuously.

Step 4 : Set another device or remote or touch panel into network pairing mode and pair to the network, refer to their manuals. 180s time limit.

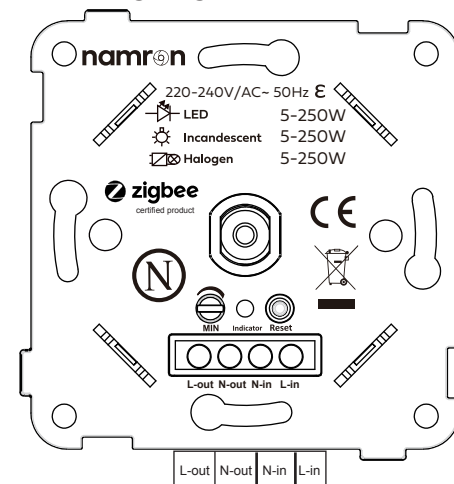
Step 5 : Pair more devices and remotes to the network as you would like, refer to their manuals.

Step 6 : Bind the added devices and remotes through Touchlink so that the devices can be controlled by the remotes, refer to their manuals.

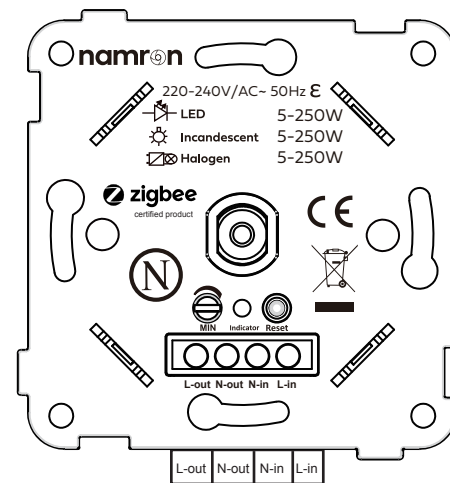
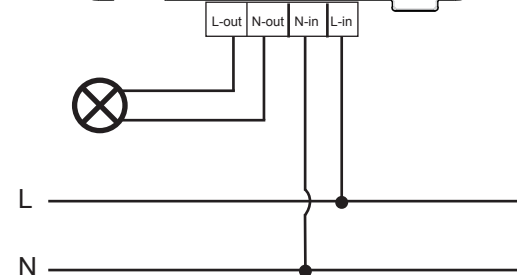
Note: 1) Each added device can link and be controlled by max.30 added remotes.

2) Please refer to remote instruction of how many devices can be linked.

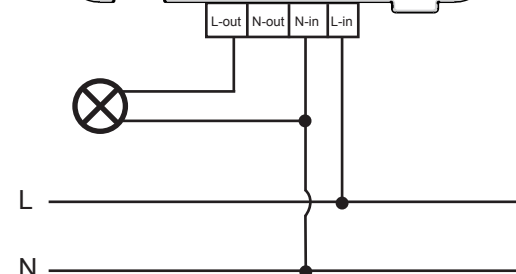
9. Wiring diagram



2Pol Wiring



1Pol Wiring



Importer:
Namron AS
Nedre kalbakkvei 88 B
1081 Oslo
Norway

Made in China