

Fastening clip 605, medium-duty



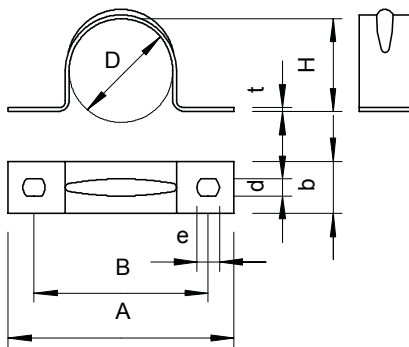
Two lobe fastening clips for cables and pipes.
* Sizes 7 to 12 not suitable for bolt-firing tool.

| Type | For Ø mm | Hole size mm | Material thickness mm | Pack. pcs | Weight kg/100 pcs. | Item No. |
|----------|-------------|--------------------|-----------------------------|--------------|-----------------------|----------|
| 605 7 G | 7 | 4,5 x 6 | 1 | 100 | 0,183 | 1018078 |
| 605 8 G | 8 | 4,5 x 6 | 1 | 100 | 0,203 | 1018086 |
| 605 9 G | 9 | 4,5 x 6 | 1 | 100 | 0,246 | 1018094 |
| 605 10 G | 10 | 4,5 x 6 | 1 | 100 | 0,432 | 1018108 |
| 605 11 G | 11 | 4,5 x 6 | 1 | 100 | 0,462 | 1018116 |
| 605 12 G | 12 | 4,5 x 6 | 1 | 100 | 0,485 | 1018124 |
| 605 13 G | 13 | 4,5 x 6 | 1 | 100 | 0,532 | 1018132 |
| 605 14 G | 14 | 4,5 x 6 | 1 | 100 | 0,560 | 1018140 |
| 605 15 G | 15 | 4,5 x 6 | 1 | 100 | 0,584 | 1018159 |
| 605 16 G | 16 | 4,5 x 6 | 1 | 100 | 0,585 | 1018167 |
| 605 17 G | 17 | 4,5 x 6 | 1 | 100 | 0,604 | 1018175 |
| 605 18 G | 18 | 4,5 x 6 | 1 | 100 | 0,640 | 1018183 |
| 605 19 G | 19 | 4,5 x 6 | 1 | 100 | 0,671 | 1018191 |
| 605 20 G | 20 | 4,5 x 6 | 1 | 100 | 0,664 | 1018205 |
| 605 21 G | 21 | 4,5 x 6 | 1 | 100 | 0,678 | 1018213 |
| 605 23 G | 23 | 4,5 x 6 | 1 | 100 | 0,826 | 1018221 |
| 605 25 G | 25 | 4,5 x 6 | 1 | 100 | 0,960 | 1018256 |
| 605 26 G | 26 | 4,5 x 6 | 1 | 100 | 0,975 | 1018264 |
| 605 28 G | 28 | 4,5 x 6 | 1 | 100 | 1,067 | 1018280 |
| 605 30 G | 30 | 4,5 x 6 | 1 | 100 | 1,150 | 1018302 |
| 605 32 G | 32 | 4,5 x 6 | 1 | 100 | 1,260 | 1018337 |
| 605 35 G | 35 | 5,5 x 7 | 1,5 | 100 | 1,921 | 1018353 |
| 605 37 G | 37 | 5,5 x 7 | 1,5 | 100 | 2,007 | 1018361 |

St Steel

G Electrogalvanised

Dimensions



Important dimensions, fastening clip

| D | A | B | H | b | t | d | e |
|----|----|----|------|----|-----|-----|----|
| mm | mm | mm | mm | mm | mm | mm | mm |
| 7 | 32 | 21 | 6 | 10 | 1 | 4,5 | 6 |
| 8 | 33 | 22 | 7 | 10 | 1 | 4,5 | 6 |
| 9 | 34 | 23 | 8 | 10 | 1 | 4,5 | 6 |
| 10 | 37 | 25 | 9 | 12 | 1 | 4,5 | 6 |
| 11 | 38 | 26 | 10 | 12 | 1 | 4,5 | 6 |
| 12 | 39 | 27 | 11 | 12 | 1 | 4,5 | 6 |
| 28 | 61 | 47 | 26 | 14 | 1 | 4,5 | 6 |
| 30 | 63 | 49 | 28 | 14 | 1 | 4,5 | 6 |
| 33 | 66 | 52 | 30 | 14 | 1 | 4,5 | 6 |
| 35 | 70 | 56 | 32 | 14 | 1,5 | 5,5 | 7 |
| 37 | 72 | 58 | 34 | 14 | 1,5 | 5,5 | 7 |
| 19 | 47 | 35 | 17,5 | 12 | 1 | 4,5 | 6 |
| 20 | 49 | 37 | 18,5 | 12 | 1 | 4,5 | 6 |
| 21 | 50 | 38 | 19,5 | 12 | 1 | 4,5 | 6 |
| 23 | 52 | 40 | 21 | 12 | 1 | 4,5 | 6 |
| 25 | 58 | 44 | 23 | 14 | 1 | 4,5 | 6 |
| 26 | 59 | 45 | 24 | 14 | 1 | 4,5 | 6 |
| 13 | 41 | 29 | 12 | 12 | 1 | 4,5 | 6 |
| 14 | 42 | 30 | 13 | 12 | 1 | 4,5 | 6 |
| 15 | 43 | 31 | 13,5 | 12 | 1 | 4,5 | 6 |
| 16 | 44 | 32 | 14,5 | 12 | 1 | 4,5 | 6 |
| 17 | 45 | 33 | 15,5 | 12 | 1 | 4,5 | 6 |
| 18 | 46 | 34 | 16,5 | 12 | 1 | 4,5 | 5 |