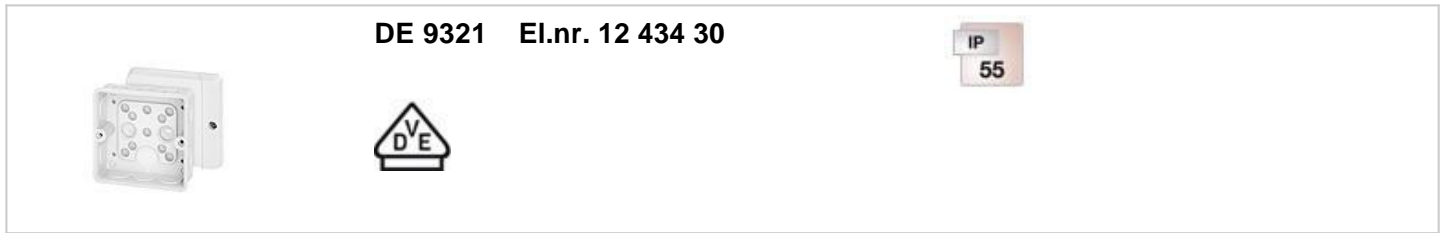


### Cable entry via elastic membranes



DE 9321 El.nr. 12 434 30

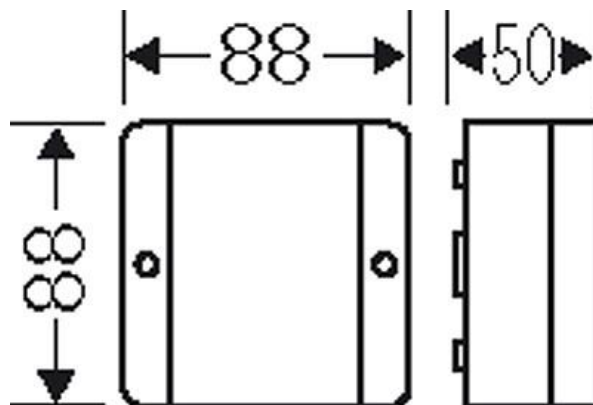
IP  
55

- without terminals
- 11 elastic membranes, closed cable entries, sealing range Ø 6-16 mm
- with one cable entry in the bottom, sealing range Ø 6-16 mm
- with cable retention (2 pc.) for cable tie up to 6.5 mm width
- colour: white, RAL 9016

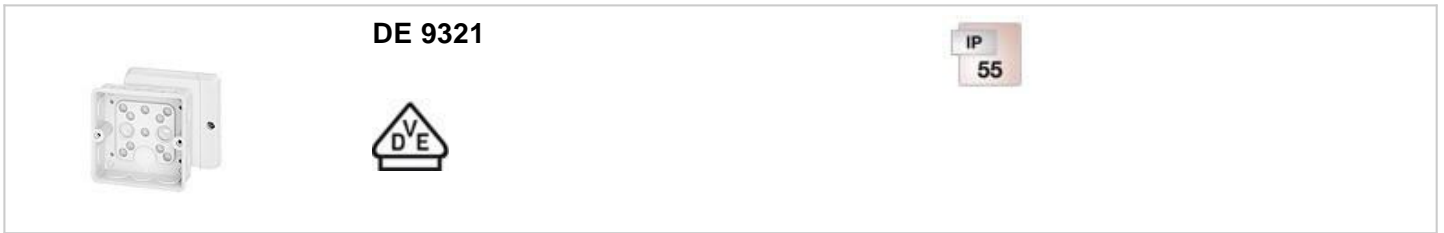
rated insulation voltage	$U_i = 690 \text{ V a.c./d.c.}$
material	PP (polypropylene)
degree of protection	IP 55
mounting width	59 mm
mounting height	76 mm
max. installation depth	33 mm
width	88 mm
height	88 mm
depth	50 mm
weight	0,098 kg
in accordance with	IEC 60670-22

### Drawings

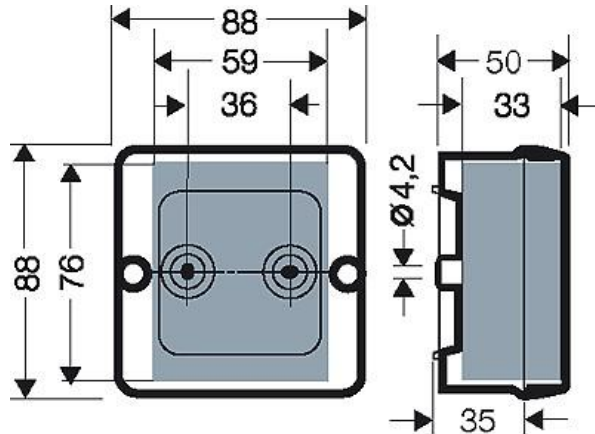
Dimension drawing



### Cable entry via elastic membranes



Detail mass



Box walls

### Operating and ambient conditions

Application area	Suitable for indoor installation and outdoor installation, protected against weather influences
Ambient temperature	Maximum value + 40 °C Minimum value - 25 °C
Fire protection in the event of internal faults	Demands placed on electrical devices from standards and laws Minimum requirements - Glow wire test in accordance with IEC 60695-2-11: - 650°C for boxes and cable glands - 850°C for parts of insulating material necessary to retain current carrying parts in position
Burning behaviour	Glow wire test IEC 60695-2-11: 750 °C UL Subject 94: V-2 flame-retardant self-extinguishing
Degree of protection against mechanical load	IK07 (2 Joule)
Toxic behaviour	halogen-free silicone-free "halogen-free" in accordance with the examination of the cables and insulated wires - corrosiveness of fumes - as per IEC 60754-2
Note:	For material properties see technical data.