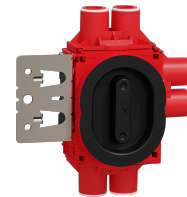




Data Sheet 1223829

Product: Flexi Abox 1,5M, 13 mm, 6 stub+beam fire
El-number: 1223829
Mat.no: EKO07418
EAN:
Packing:
Color: Red

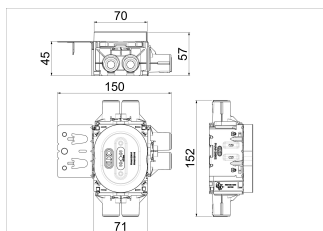


Product description: Flexi+ fireprotectionbox 1,5M , approved for use in firewalls EI30 or EI60. The cutout for the box must not exceed 74mm, and must be done with a cutter. The firebox has to be centered in the hole. See document kombinasjoner for approved combinations.

1,5 box flush mounted for ELKO double socket outlets, must be used for lowprofile double socket outlets in RS, Option or ELKO Plus design. Suitable for 1 plate of plasterboard or wooden panel. Conduit entries: 6 entries x combiinterface 16 or 20 mm Delivered with locking springs and sealingplugs in each entry, and plastic lid. Integrated docking to ease the installation of boxcombinations.
The hole can easily be cut out with the ELKO cutout template elnr: 8814757

Technical specifications: Flush mounted box.
Diameter: \varnothing :71mm
Fixing screws: C-C 60mm
Halogenfree: Yes
Certified: NEMKO, SEMKO, FIMKO
Glow wire test: 850°C
Degree of protection: IP30
Suitable for plates: 13mm
Cuttersize: 73mm
Fireprotection approval: RISE C9001152
See userguide and approval document for further information.

Size



Wiring diagram

Applicable installations and combinations related to fire class

	1	2	3	4	5	6	7	8
EI 60	✓	✓	✓	✓	✓	✓	✓	✓
EI 90	✓	✓	✓	✓	✓	✓	✓	✓

ELKO AS

E-mail: elko@elko.no
Internet: www.elko.no
Bank: 6219.05.15880
Org.no.: NO 911 382 563 MVA

ELKO Front office
Sandstuveien 68, NO-0680 Oslo
P.O.Box 6598 Etterstad, NO-0607 Oslo
Tel.: +47 67 80 73 00
Fax: +47 67 80 73 01

ELKO Plant
Sporvind Industriområde, NO-3340 Åmot
Tel.: +47 32 78 91 00
Fax: +47 32 78 91 01