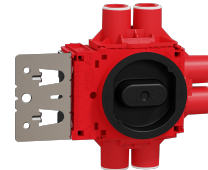




Data Sheet 1223827

Product: Flexi Abox 1M 9-21 mm, 6 stubs+beam fire
EI-number: 1223827
Mat.no: EKO07412
EAN:
Packing:
Color: Red



Product description: Flexi+ fireprotectionbox with 6 tubeintroductions, approved for use in firewalls EI30, EI60 or EI90. The cutout for the box must not exceed 74mm, and must be done with a cutter. The firebox has to be centered in the hole. See document kombinasjoner for approved combinations.

The box has increased volume for connectors, controlunits and more space to increase lifecycle of electronic products. Fixingring fits plates 9-21mm. Manually adjustable fixingring, the ring is adjustable when turned to 45° and locked when turned horizontally or vertically. Integrated docking to make boxcombinations easy. The box is combinable with a good variety of accessories available. Flexi+ box is delivered with 20mm tubeinserts with 16mm reduction.

Technical specifications: Flush mounted box.
Diameter: Ø:71mm
Fixing screws: C-C 60mm
Halogenfree: Yes
Certified: NEMKO, SEMKO, FIMKO
Glow wire test: 850°C
Degree of protection: IP30
Suitable for plates: 9-21mm
Cuttersize: 73mm
Fireprotection approval: RISE C9001152
See userguide and approval document for further information.

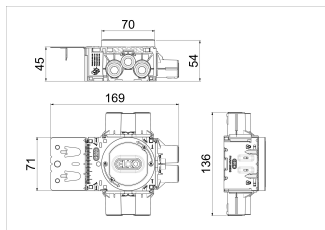
ELKO AS

E-mail: elko@elko.no
Internet: www.elko.no
Bank: 6219.05.15880
Org.no.: NO 911 382 563 MVA

ELKO Front office
Sandstuveien 68, NO-0680 Oslo
P.O.Box 6598 Etterstad, NO-0607 Oslo
Tel.: +47 67 80 73 00
Fax: +47 67 80 73 01

ELKO Plant
Sporpind Industriområde, NO-3340 Åmot
Tel.: +47 32 78 91 00
Fax: +47 32 78 91 01

Size



Wiring diagram

Applicable installations and combinations related to fire class

EI 60	✓	✓	✓	✓	✓	✓	✓
EI 90	✓	✓	✓	✓	✓	✓	✓

ELKO AS

E-mail: elko@elko.no
 Internet: www.elko.no
 Bank: 6219.05.15880
 Org.no.: NO 911 382 563 MVA

ELKO Front office
 Sandstuveien 68, NO-0680 Oslo
 P.O.Box 6598 Etterstad, NO-0607 Oslo
 Tel.: +47 67 80 73 00
 Fax: +47 67 80 73 01

ELKO Plant
 Sporpind Industriområde, NO-3340 Åmot
 Tel.: +47 32 78 91 00
 Fax: +47 32 78 91 01