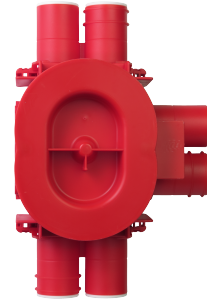




## Data Sheet 1223705

**Product:** App.box 1.5 mod, 6 stubs, NO  
**El-number:** 1223705  
**Mat.no:** 4044  
**EAN:** 7020160404411  
**Packing:** 25  
**Color:** Red



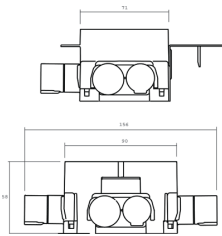
**Product description:** 1,5 box flush mounted for lowprofile double socket outlets. Suitable for 1 plate of plasterboard or wooden panel. Conduit entries: 6 entries x combiinterface 16 or 20 mm Delivered with locking springs and sealingplugs in each entry, and plastic lid. The box is delivered without bracket. The hole can easily be cut out with the ELKO cutout template elnr: 8814757

---

**Technical specifications:** Flush mounted wallbox 71mmØ, depth 57mm.  
Mounting screws 60mm cc.  
Modulbased: combinable, with use of accessories.  
Material: Enviromental friendly, Halogenfree, flame retardant plastic.  
Glow wiretest > 850 °C  
Standard: CEE publikasjon 7 XIII.  
EMKO-TUI (25) SF 101/76 (Nordisk).  
NEK 516:82.  
Sertifications: NEMKO SEMKO FIMKO  
Cutout: 73mm, with the cutout template el.nr: 8814757

---

### Size



### Wiring diagram

### ELKO AS

E-mail: elko@elko.no  
Internet: www.elko.no  
Bank: 6219.05.15880  
Org.no.: NO 911 382 563 MVA

ELKO Front office  
Sandstuveien 68, NO-0680 Oslo  
P.O.Box 6598 Etterstad, NO-0607 Oslo  
Tel.: +47 67 80 73 00  
Fax: +47 67 80 73 01

ELKO Plant  
Sporpind Industriområde, NO-3340 Åmot  
Tel.: +47 32 78 91 00  
Fax: +47 32 78 91 01